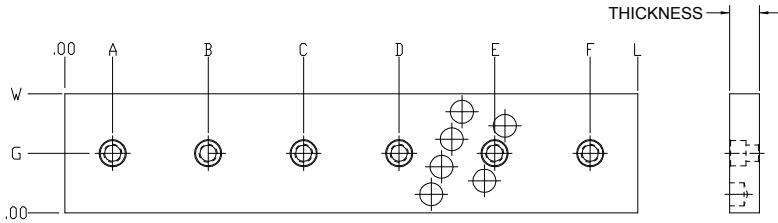


# Wear strips – Inch

## PATTERN A

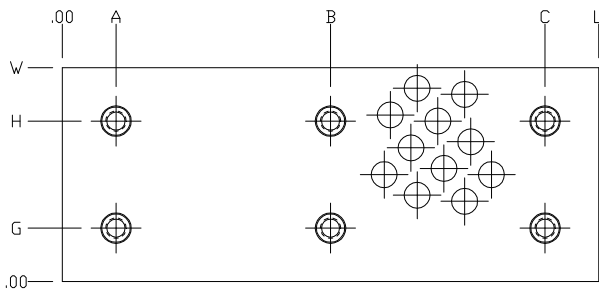


## Circle Pattern

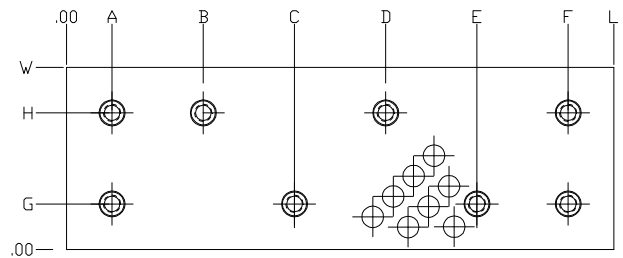
### THICKNESS & MOUNTING SCREWS

- 1/4" THICK PLATES: 1/4" FLAT HEAD SCREW
- 3/8" THICK PLATES: 1/4" S.H.C.S.
- 1/2" THICK PLATES: 5/16" S.H.C.S.
- 5/8" THICK PLATES: 5/16" S.H.C.S.

## PATTERN B



## PATTERN C



Material:      Solid Bronze      Bronze plated Steel      Self Lube Plugs:      Y      N

- LIST ALL REQUIRED DIMENSIONS AND TOLERANCES.
- IF NO TOLERANCE IS SPECIFIED, THEN THE STANDARD CATALOG TOLERANCE WILL BE USED
- ALL SELF LUBE PRODUCTS HAVE 20-30% COVERAGE

|     | Description             | Required Dimension |   |   |   |   |   |   |   | Required Tolerance |
|-----|-------------------------|--------------------|---|---|---|---|---|---|---|--------------------|
|     |                         | A                  | B | C | D | E | F | G | H |                    |
| A-H | Mounting Hole Locations |                    |   |   |   |   |   |   |   | /                  |
| W   | Overall Width           |                    |   |   |   |   |   |   |   | /                  |
| L   | Overall Length          |                    |   |   |   |   |   |   |   | /                  |

Quantity Required: \_\_\_\_\_

Special Requirements:

### Contact Information:

|               |  |      |  |
|---------------|--|------|--|
| Customer:     |  |      |  |
| Contact Name: |  |      |  |
| Phone:        |  | FAX: |  |
| E-Mail:       |  |      |  |