

## Basic and Ball Lock Series

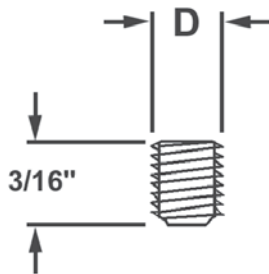
Available in single sets which include pin, spring and set screw; or individual components in minimum quantities of 10 pieces.

Please specify quantity and catalog number.

**Ordering Example:** 3 KP 3 Ejector Sets.

Catalog Numbers			
Ejector Group Sets	Set Screws	Springs	Pins
KP2	KPW2	KPS2	KPP2
KP23	KPW2	KPS2	KPP3
KP3	KPW3	KPS3	KPP3
KP4	KPW4	KPS4	KPP4
KP6	KPW6	KPS6	KPP6
KP9	KPW9	KPS9	KPP9

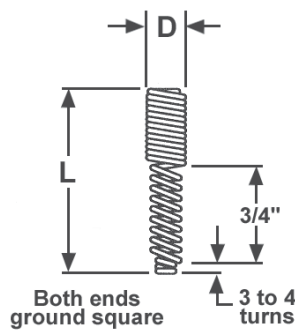
### KPW (SET SCREW)



Catalog Number	D
KPW2	3 - 48
KPW3	5 - 40
KPW4	8 - 32
KPW6	10 - 32
KPW9	1/4 - 28

**Example:** 15 KPW 3

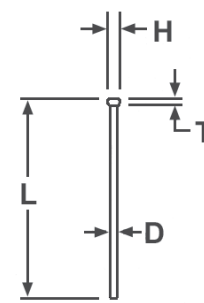
### KPS (SPRING)



Catalog Number	D	L
KPS2	.084	2.37
KPS3	.107	2.37
KPS4	.139	3.19
KPS6	.170	3.00
KPS9	.221	3.03

**Example:** 10 KPS 2

### KPP (PIN)

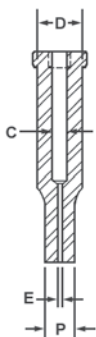


Catalog Number	D	L	H	T
KPP2	.015	1.10	.048	.031
KPP3	.027	1.38	.073	.046
KPP4	.041	1.94	.094	.062
KPP6	.058	1.94	.125	.062
KPP9	.089	2.22	.156	.093

**Example:** 24 KPP 4

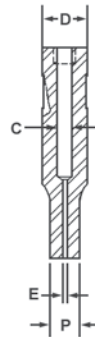
**NOTE:** Available only in minimum quantities of 10 units. To order, specify quantity and catalog number. See ordering example.

### KP (BASIC)



Ball Lock Standard Ejector Data			
Ejector Group	Std. Shank Dia. D	Point Hole Dia. E	Shank Hole Dia. C
KP2	3/16	.020	.086
KP23	3/16	.032	.086
KP3	1/4	.032	.109
KP4	5/16	.046	.141
KP6	3/8 - 1/2	.063	.172
KP9	5/8 - 1	.094	.223

### KP (BALL LOCK)



Ball Lock Standard Ejector Data			
Ejector Group	Std. Shank Dia. D	Point Hole Dia. E	Shank Hole Dia. C
KP2	1/4	.020	.086
KP23	1/4	.032	.086
KP4	3/8	.046	.141
KP6	1/2 - 5/8	.063	.172
KP9	3/4 - 1-1/4	.094	.223

## Variable Precision Series

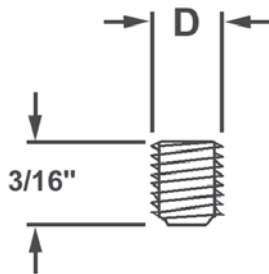
Available in single sets which include pin, spring and set screw; or individual components in minimum quantities of 10 pieces.

Please specify quantity and catalog number.

Catalog Numbers			
Ejector Group Sets	Set Screws	Springs	Pins
VP2	VPW2	VPS2	VPP2
VP3	VPW3	VPS3	VPP3
VP4	VPW4	VPS4	VPP4
VP6	VPW6	VPS6	VPP6
VP9	VPW9	VPS9	VPP9

Ordering Example: 3 VP 3 Ejector Sets.

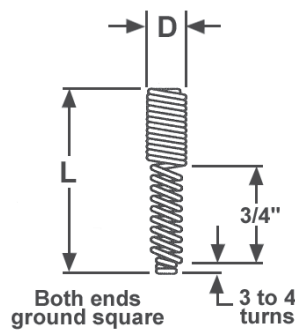
### VPW (SET SCREW)



Catalog Number	D
VPW2	3 - 48
VPW3	5 - 40
VPW4	8 - 32
VPW6	10 - 32
VPW9	1/4 - 28

Example: 15 VPW 3

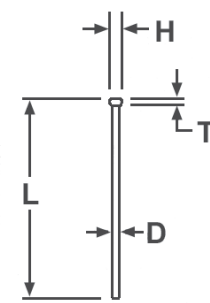
### VPS (SPRING)



Catalog Number	D	L
VPS2	.084	2.37
VPS3	.107	2.37
VPS4	.139	3.19
VPS6	.170	3.00
VPS9	.221	3.03

Example: 10 VPS 2

### VPP (PIN)



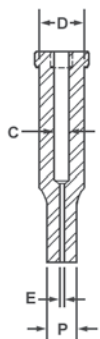
Tool Steel

Catalog Number	D	L	H	T
VPP2	.015	1.10	.048	.031
VPP3	.027	1.38	.073	.046
VPP4	.041	1.94	.094	.062
VPP6	.058	1.94	.125	.062
VPP9	.089	2.22	.156	.093

Example: 24 VPP 3

**NOTE:** Available only in minimum quantities of 10 units. To order, specify quantity and catalog number. See ordering example.

## VP (VARIABLE)



Ball Lock Standard Ejector Data			
Ejector Group	Std. Shank Dia. D	Point Hole Dia. E	Shank Hole Dia. C
VP2	.1875	.020	.086
VP3	.2500	.032	.109
VP4	.3125	.046	.141
VP6	.3750-.5000	.063	.172
VP9	.6250-1.000	.094	.223