

CODED SHAPES

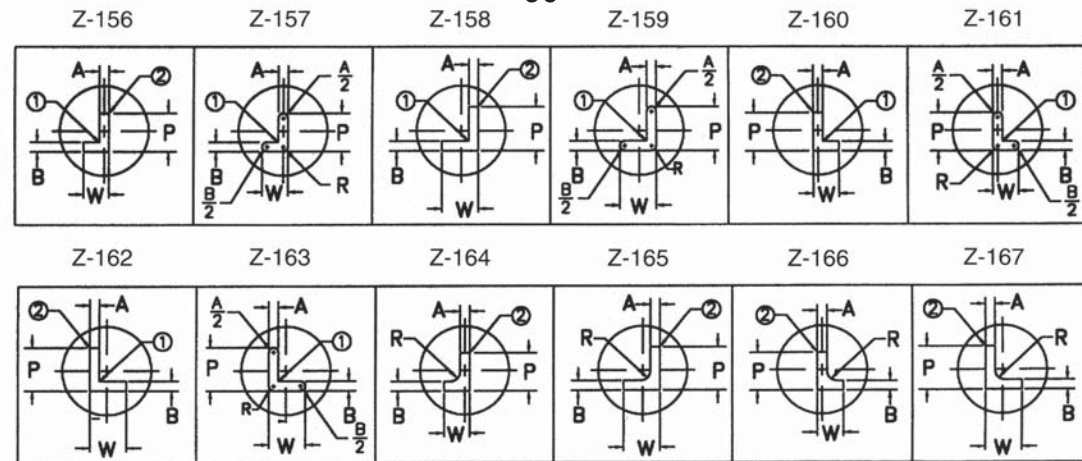
NOTE: Coded shapes are centered on the shank or body as shown.

① .003 to .007 fillet on punches, sharp on dies and guides

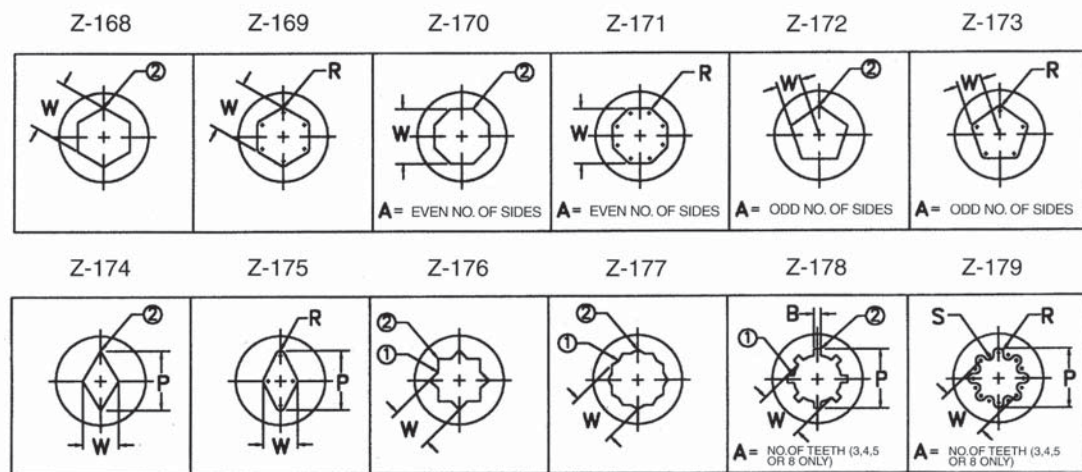
② .003 to .007 fillet on dies and guides, sharp on punches

Shape Orientation:
Punches are viewed "through the shank." Die buttons are viewed from "top of die."

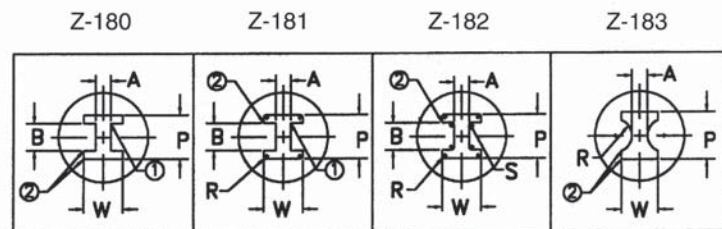
90°



180°



0°



270°

Coded and Special Shapes for Punches and Die Buttons

CODED SHAPES (Z PREFIX)

On the following pages, 83 coded shapes are provided, which can be produced on a standard punch shank component or in a standard die button. This is designed to simplify ordering and eliminate the need for special drawings. All shank and length dimensions are as per standard catalog items.

Shape Orientation

Punches are viewed "Through the Shank." Die Buttons are viewed from "Top of Die."

Locating Devices (see Variable and Basic Catalogs)

Basic and Variable Precision Series Standard key flat is at 0° (SKF)

Ball Lock Series Standard ball seat location is at 90°.

Custom Location to be specified

Type, Angle, Depth

Ordering Examples

Basic Series

10 ZPM100 L 3.50 Z-103 P .625 W .500 M2 SKF
(CPM becomes ZPM)

Variable Precision Series

10 ZKV75 - 3505 Z-176 P .938 W .500 A2 SKF
(CKV becomes ZKV)

Ball Lock Series

15 HBZP100 L 4.00 Z-105 P .938 W .625 A .375 M2
(HBCP becomes HBZP)

SPECIAL SHAPES (D PREFIX)

The customer must specify point or hole shape, complete with dimensions, tolerances, concentricity limits and orientation, with the component center line. An engineering drawing is required. If standard catalog D and L dimensions are desired, these may be selected from the appropriate catalog page.

Shape Orientation

Customer to specify on print.

Locating Devices

Customer to specify on print.

Ordering Examples

Special Shape

5 DPM37 L 3.00 A2 per print (CPM becomes DPM)

CODED SHAPES

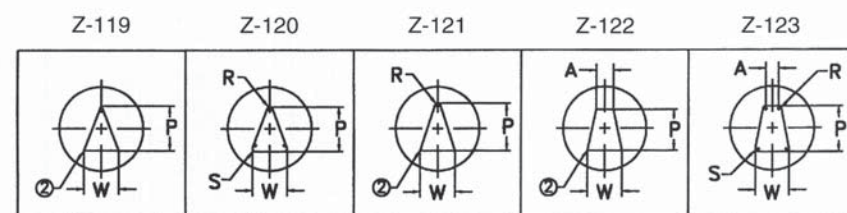
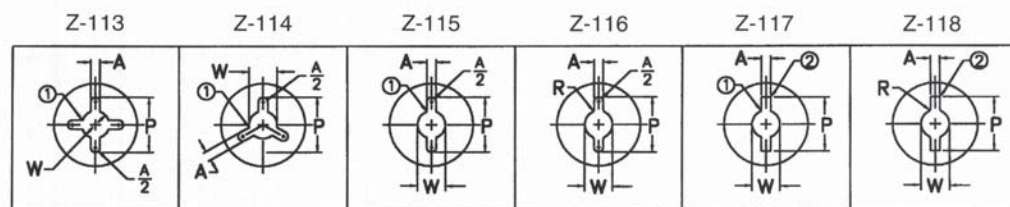
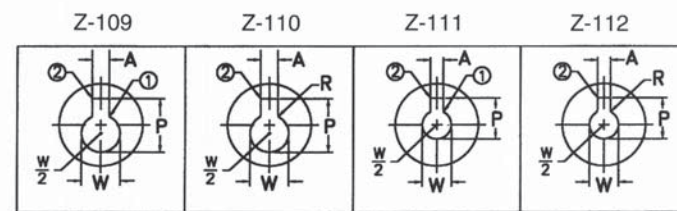
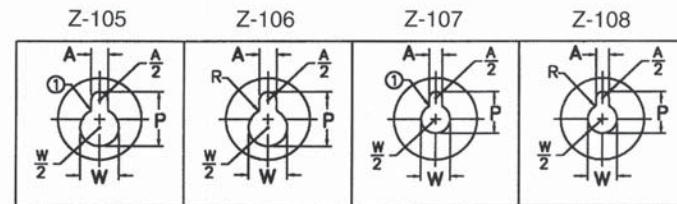
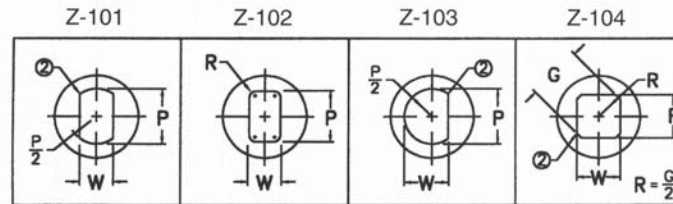
NOTE: Coded shapes are centered on the shank or body as shown.

① .003 to .007 fillet on punches, sharp on dies and guides

② .003 to .007 fillet on dies and guides, sharp on punches

Shape Orientation: Punches are viewed "through the shank." Die buttons are viewed from "top of die."

90°



270°

0°

180°

CODED SHAPES

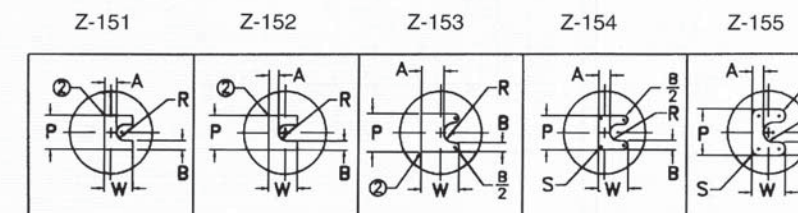
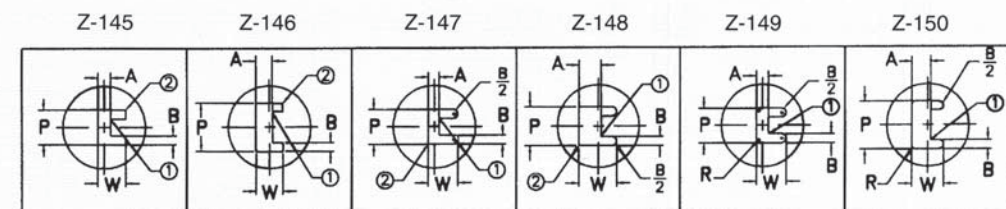
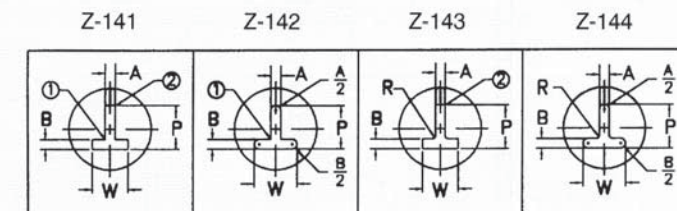
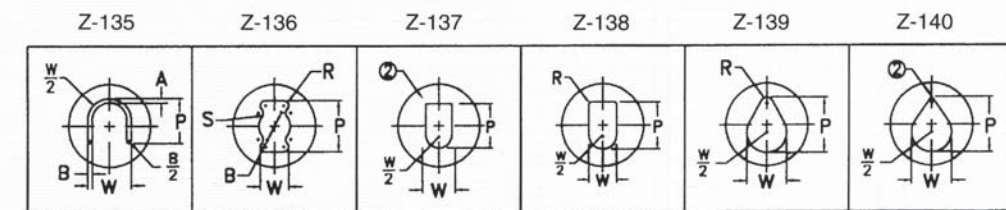
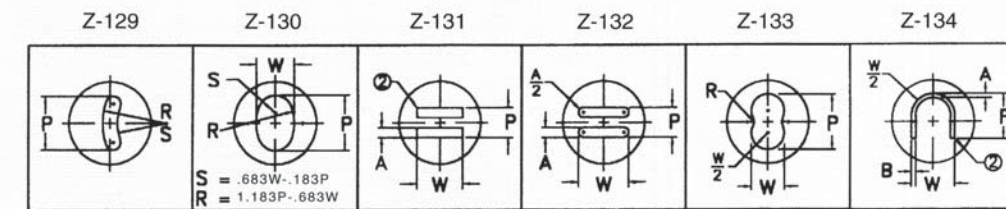
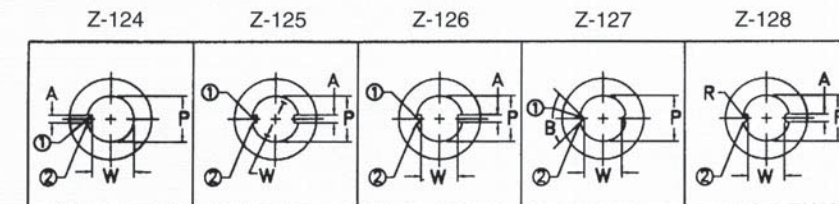
NOTE: Coded shapes are centered on the shank or body as shown.

① .003 to .007 fillet on punches, sharp on dies and guides

② .003 to .007 fillet on dies and guides, sharp on punches

Shape Orientation: Punches are viewed "through the shank." Die buttons are viewed from "top of die."

90°



270°

0°

180°