

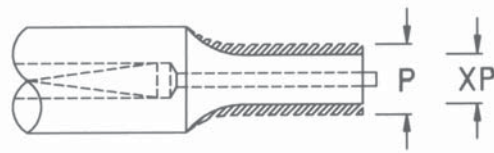
## Alterations

*The manufacture of components with dimensions outside the ranges listed as standard in the catalog. The limits for each standard dimensions are available on request, and there will be an additional charge for these components.*

## Punches

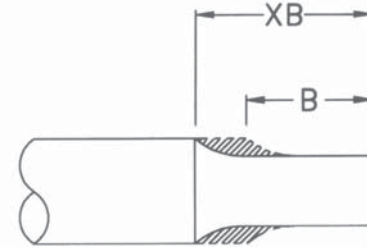
### XP, XW

Point Dimensions (round or shapes) smaller than standard.



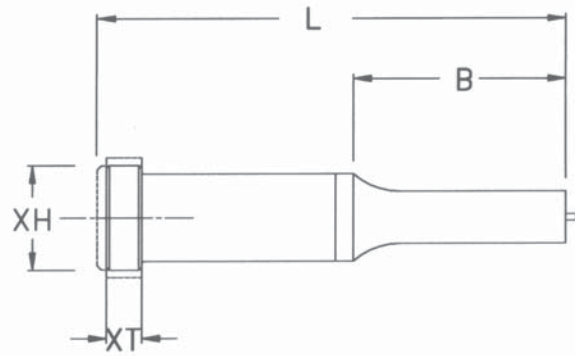
### XB\_

Point longer than standard. Add **R** to code for rounds, **S** for shapes.



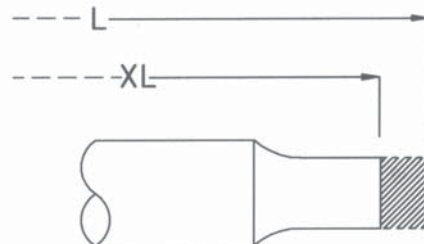
### XT, XH

XT reduced head thickness, and OAL. XH reduced head diameter.



### XL

Reduced overall length. Stock removed from point end, which also reduces B length.



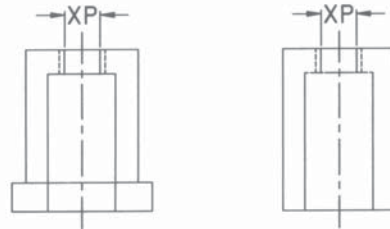
## Alterations

*The manufacture of components with dimensions outside the ranges listed as standard in the catalog. The limits for each standard dimensions are available on request, and there will be an additional charge for these components.*

## Die Buttons

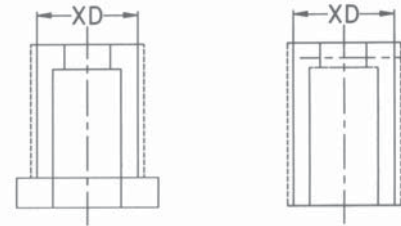
### XP, XP/XW

**XP** Hole smaller or larger than standard.  
**XP/XW** Shape dimension smaller or larger than standard.



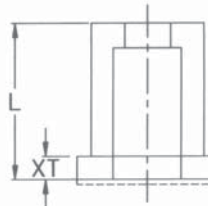
### XD

Reduced shank diameter.



### XT

Reduced head thickness, and OAL.



### XH

Reduced head diameter.



### XL

Shortened overall length.  
 For Headed Buttons, material is moved from land end.  
 For Headless Button, material is removed from relief end.

