



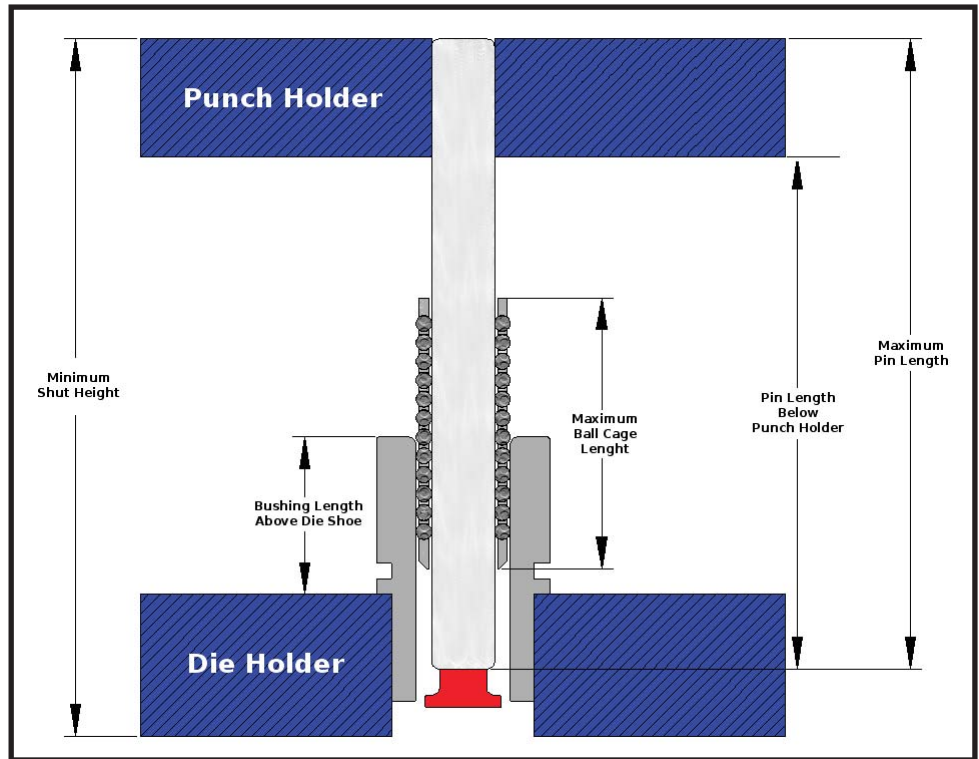


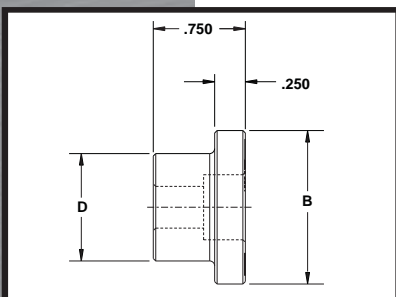
## DANLY "CAGE STOPPER" END CAP

-  An alternative method to attach the ball bearing cage to a **DANLY** ball bearing guide post
-  The CAGE STOPPER is attached to a standard catalog **DANLY** guide post with a provided socket head cap screw
-  The CAGE STOPPER attaches to the guide post allowing the ball bearing cage to rotate when not in the preloaded position
-  The CAGE STOPPER is a good option when cage travel required is more than what is available with our traditional **DANLY** ball bearing cages



*Socket Head Cap Screw Included*

Guide Pin Diameter	1"	1-1/4"	1-1/2"	1-3/4"	2"	2-1/2"	3"
Part Number	CS-0804	CS-1004	CS-1204	CS-1404	CS-1604	CS-2004	CS-2404
Dimension D	0.875	1.125	1.375	1.625	1.875	2.375	2.875
Dimension B	1.250	1.500	1.750	2.000	2.375	2.875	3.375



**CALL: 248-489-9122 • TOLL FREE: 800-652-6462**

**FAX: 800-406-4410**

**Email: [info@anchorlamina.com](mailto:info@anchorlamina.com)**

**[www.anchorlamina.com](http://www.anchorlamina.com)**