

# Urethane Stripping & Forming Products

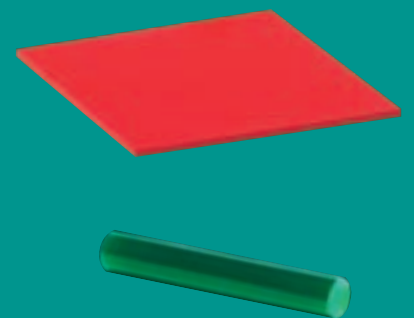
Sheets, Rods, Bars, Tubes, Springs



## SMARTStrip™ Strippers



Global leader in quality metal fabrication and stamping tools



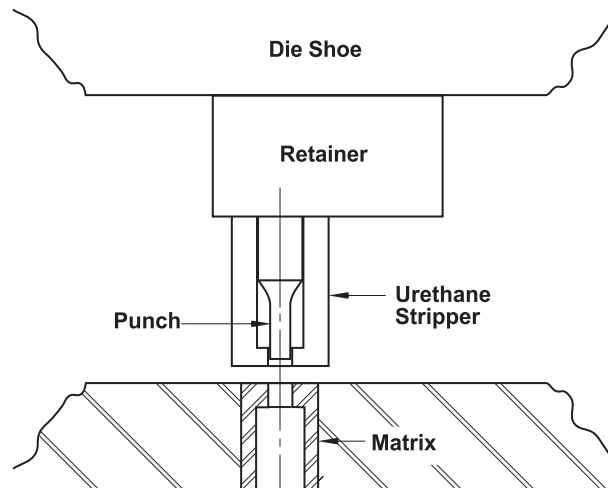
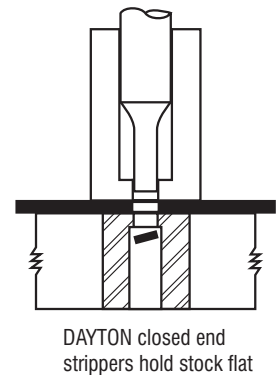
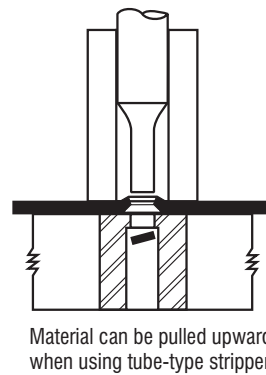
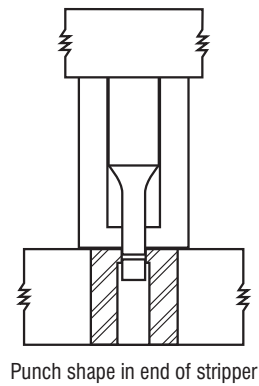
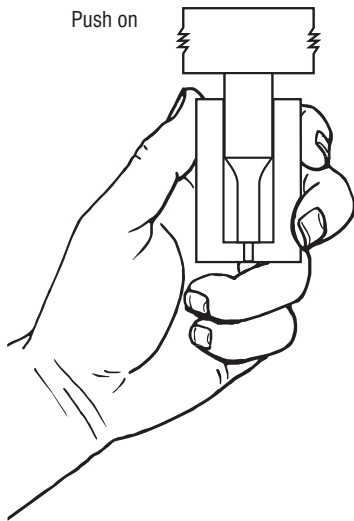
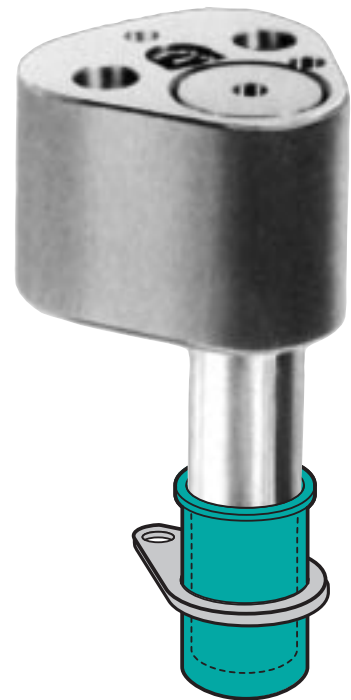
[www.daytonprogress.com](http://www.daytonprogress.com)

# Closed End Punch Strippers

Closed End Urethane Strippers assure positive stripping and at the same time dampen punch vibration by gripping around the punch point. Since vibration can lead to premature punch failure, using DAYTON PROGRESS Urethane Strippers will increase overall punch life. The closed end feature holds thin stock flat during the stripping cycle, eliminating the problem of damaging the stock strip.

## And that's not all...

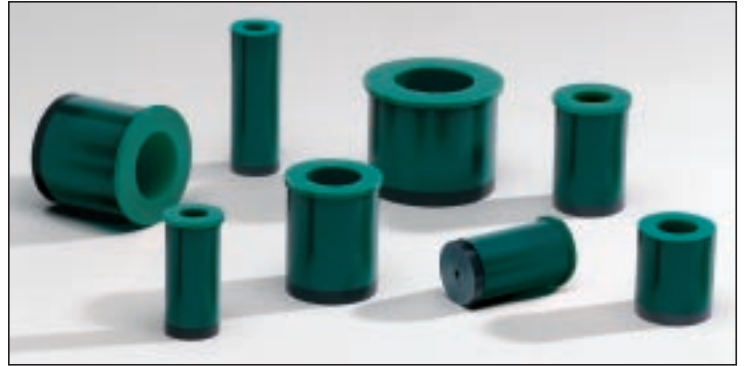
Because of a unique curing agent, DAYTON's Urethane Strippers develop more load-bearing capacity than similar urethanes. This special curing agent also contributes to consistent pressure ratings.



# **SMART-Strip™** **Hard Face / Dual Durometer** **Urethane Strippers**

## **A New DAYTON PROGRESS Exclusive**

- Stamping shapes in thin material?
- Stamping pre-painted material?
- Short runs?
- Piercing on angles or complex contours?
- ...Any application where using a metal spring stripper is problematic or just not cost effective.



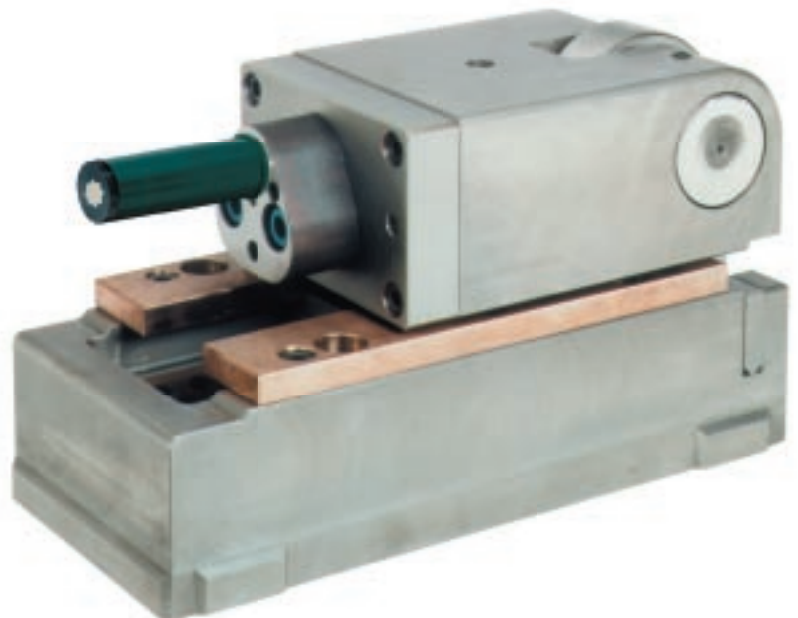
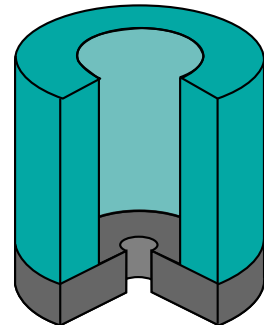
The answer is the new SMARTStrip™. Available only from DAYTON PROGRESS.

The body of the closed-end punch stripper is made of flexible, softer urethane elastomer 95A, enabling deflections up to 15%.

The 75D durometer hard face is elastic, durable and does not mark the surface of the sheet metal or prepainted material.

The SMARTStrip works similar to a metallic spring stripper plate that is machined to match the face of the punch tip.

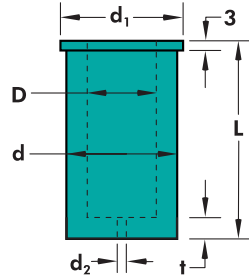
Unlike strippers that have a piece of plastic or metal glued to the end, the hard face on the SMARTStrip can not separate from the body.



# Headed Strippers

- Designed to comply with NAAMS™ (North American Automotive Metric Standard) & FORD World Standard.
- The headed design prevents the strippers from falling into die.
- Fits most makes of standard retainers for head type and ball lock type punches. Standard durometer: 95A

D	d	d <sub>1</sub>	t	d <sub>2</sub>
10	18	21	6	1.6
13	23	26	6	3.0
16	28	31	6	3.0
20	33	36	7	3.0
25	40	43	7	3.0
32	50	55	7	3.0
38	60	65	8	3.0
40	60	65	8	3.0



Urethane hardness: shore 95±2; maximum compression: 15% of overall length. (pressure ratings shown in Newtons)

NOTE: 43mm long bushings should not be compressed more than 6.5mm. More compression exceeds 15% recommended maximum.

UHM, UHS, UBP, and URP conform to NAAMS™ standards.

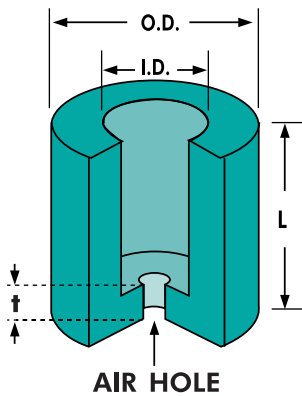
## UHS SMARTStrip™ Strippers

I.D.	O.D.	L	Catalog #	Pressure at Deflection of			Max Bulge
				3	6	9	
10	18	43	UHS-10-43	940	1395	—	22.7
		52	UHS-10-52	800	1285	1715	22.1
		63	UHS-10-63	685	965	1150	21.2
		72	UHS-10-72	580	855	1060	20.8
13	23	43	UHS-13-43	1425	2430	—	28.7
		52	UHS-13-52	1280	1870	2580	27.9
		63	UHS-13-63	970	1550	2010	27
		72	UHS-13-72	870	1470	1965	26.3
16	28	43	UHS-16-43	2320	3305	—	35.2
		52	UHS-16-52	2030	2960	3645	34.1
		63	UHS-16-63	1570	2360	3060	32.8
		72	UHS-16-72	1475	2245	2890	31.8
20	33	43	UHS-20-43	2930	4300	—	41.2
		52	UHS-20-52	2455	3445	4990	40.6
		63	UHS-20-63	2055	3140	4010	39.1
		72	UHS-20-72	1580	2205	2790	37.5
25	40	43	UHS-25-43	4040	6015	—	49.7
		52	UHS-25-52	3350	5470	6795	48.5
		63	UHS-25-63	2730	4185	5220	46.2
		72	UHS-25-72	2385	3630	4265	45.1
32	50	43	UHS-32-43	5960	8425	—	59.9
		52	UHS-32-52	5240	7875	9925	59.4
		63	UHS-32-63	4210	5855	8325	57.7
		72	UHS-32-72	3510	5340	6985	56
38	60	52	UHS-38-52	6645	9890	13785	69.5
		72	UHS-38-72	4935	7850	9425	67.5
40	60	43	UHS-40-43	7880	12115	—	69.5
		52	UHS-40-52	6470	9745	12680	68.9
		63	UHS-40-63	6355	9045	11105	68.2

t=6.3mm

# Headless Strippers

- Ideal for punching odd shaped holes.
- Assure positive stripping.
- Increases punch life, as punch stripper supports the punch tip, by dampening the vibration of the punch, as it pierces the sheet metal.



Urethane hardness: shore 95±2; maximum compression: 15% of overall length. (pressure ratings shown in Newtons)

## USS SMARTStrip™ Strippers

I.D.	O.D.	L	Catalog #	Pressure at Deflection of			Max Bulge
				1/8	1/4	3/8	
3/16	11/16	1 1/4	USS-18-125	300	490	—	3/16
		1 1/2	USS-18-150	230	350	—	1/8
1/4	3/4	1 1/4	USS-25-125	325	535	—	13/64
		1 1/2	USS-25-150	310	485	—	3/16
		1 3/4	USS-25-175	300	475	650	5/32
5/16	13/16	1 1/4	USS-31-125	335	565	—	7/32
		1 1/2	USS-31-150	295	475	—	3/16
		1 3/4	USS-31-175	290	465	645	5/32
		2	USS-31-200	285	455	600	9/64
3/8	7/8	1 1/4	USS-37-125	455	730	—	1/4
		1 1/2	USS-37-150	370	625	—	7/32
		1 3/4	USS-37-175	365	595	770	5/32
		2	USS-37-200	355	560	730	9/64
1/2	1	1 1/4	USS-50-125	540	825	—	5/16
		1 1/2	USS-50-150	520	800	—	1/4
		1 3/4	USS-50-175	465	735	900	7/32
		2	USS-50-200	440	715	875	3/16
5/8	1 1/8	2 1/4	USS-50-225	380	635	790	5/32
		1 1/4	USS-62-125	650	1000	—	11/32
		1 1/2	USS-62-150	560	870	—	9/32
		1 3/4	USS-62-175	515	820	1030	7/32
3/4	1 1/2	2	USS-62-200	500	810	1025	3/16
		1 3/4	USS-75-175	810	1275	1650	5/16
		2	USS-75-200	725	1140	1490	1/4
		2 1/4	USS-75-225	705	1090	1375	7/32
7/8	1 3/4	2 1/2	USS-75-250	545	950	1240	3/16
		2 3/4	USS-75-275	460	805	1030	5/32
		1 3/4	USS-87-175	1370	2040	2675	5/16
		2	USS-87-200	1155	1825	2395	9/32
1	2	2 1/4	USS-87-225	1050	1745	2310	1/4
		2 1/2	USS-87-250	990	1630	2220	7/32
		2 3/4	USS-87-275	835	1480	1830	3/16
		1 3/4	USS-100-175	1840	2825	3775	5/16
1	2	2	USS-100-200	1430	2305	2965	9/32
		2 1/4	USS-100-225	1115	1930	2525	5/32
		2 1/2	USS-100-250	1055	1840	2460	1/4
		2 3/4	USS-100-275	1030	1740	2330	7/32

t=1/4"

# UHM

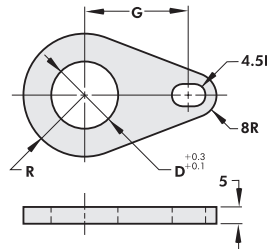


I.D.	O.D.	L	Catalog #	Pressure at Deflection of			Max Bulge
				3,0mm	6,0mm	9,0mm	
10	18	43	UHM-10-43	1015	1590	—	21.4
		52	UHM-10-52	930	1450	1760	21.2
		63	UHM-10-63	860	1305	1465	21
		72	UHM-10-72	765	1175	1215	20.7
13	23	43	UHM-13-43	1435	2645	—	28.5
		52	UHM-13-52	1215	2240	2815	27.6
		63	UHM-13-63	1030	2015	2530	26.6
		72	UHM-13-72	875	1835	2300	26
16	28	43	UHM-16-43	2335	3525	—	34
		52	UHM-16-52	2160	3310	4230	33
		63	UHM-16-63	1810	2905	4020	32
		72	UHM-16-72	1445	2510	3475	31.6
20	33	43	UHM-20-43	3075	4605	—	40.5
		52	UHM-20-52	2845	4240	5280	39.2
		63	UHM-20-63	2455	3750	4860	38.2
		72	UHM-20-72	2085	3250	4180	37
25	40	43	UHM-25-43	4140	6150	—	48.5
		52	UHM-25-52	3460	5505	7305	47.5
		63	UHM-25-63	2780	4860	6645	46
		72	UHM-25-72	2390	4530	5740	45
32	50	43	UHM-32-43	6490	8965	—	58.5
		52	UHM-32-52	5580	8320	10895	58
		63	UHM-32-63	4540	7675	9465	57
		72	UHM-32-72	3730	6980	8140	56
38	60	52	UHM-38-52	7360	11960	14265	69
		72	UHM-38-72	5805	10275	11970	66.5
40	60	43	UHM-40-43	8335	12450	—	70
		52	UHM-40-52	7410	10570	13635	69.5
		63	UHM-40-63	6380	9100	11970	68.5

t=6.3mm

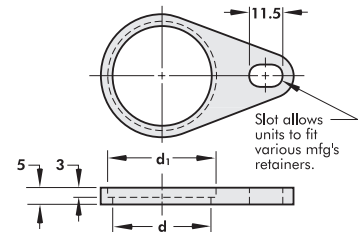
# UBP

## Backing Plate



# URP

## Retaining Plate



Catalog Plate #		D	d	d1	R	G	URP EDP Set
Back	Retaining						
UBP10	URP10	10	19	22	13.0	28.0	748579
UBP13	URP13	13	24	27	15.5	31.0	748587
UBP16	URP16	16	29	32	18.0	32.9	748595
UBP20	URP20	20	34	37	20.5	34.8	748609
UBP25	URP25	25	41	44	24.0	39.8	748617
UBP32	URP32	32	51	56	31.0	41.3	748625
UBP38	URP38	38	61	66	36.0	45.0	748633
UBP40	URP40	40	61	66	36.0	45.0	748641

Set consists of: Backing Plate, Retaining Plate and M8 x 20 Socket Head Cap Screw.

# USE



I.D.	O.D.	L	Catalog #	Pressure at Deflection of			Max Bulge
				1/8	1/4	3/8	
3/16	11/16	1 1/4	USE-18-125	300	490	—	3/16
		1 1/2	USE-18-150	230	350	—	1/8
1/4	3/4	1 1/4	USE-25-125	325	535	—	13/64
		1 1/2	USE-25-150	310	485	—	3/16
		1 3/4	USE-25-175	300	475	650	5/32
5/16	13/16	1 1/4	USE-31-125	335	565	—	7/32
		1 1/2	USE-31-150	295	475	—	3/16
		1 3/4	USE-31-175	290	465	645	5/32
		2	USE-31-200	285	455	600	9/64
3/8	7/8	1 1/4	USE-37-125	455	730	—	1/4
		1 1/2	USE-37-150	370	625	—	7/32
		1 3/4	USE-37-175	365	595	770	5/32
		2	USE-37-200	355	560	730	9/64
1/2	1	1 1/4	USE-50-125	540	825	—	5/16
		1 1/2	USE-50-150	520	800	—	1/4
		1 3/4	USE-50-175	465	735	900	7/32
		2	USE-50-200	440	715	875	3/16
5/8	1 1/8	1 1/4	USE-50-225	380	635	790	5/32
		1 1/2	USE-62-125	650	1000	—	11/32
		1 1/2	USE-62-150	560	870	—	9/32
		1 3/4	USE-62-175	515	820	1030	7/32
3/4	1 1/2	2	USE-62-200	500	810	1025	3/16
		1 3/4	USE-75-175	810	1275	1650	5/16
		2	USE-75-200	725	1140	1490	1/4
		2 1/4	USE-75-225	705	1090	1375	7/32
7/8	1 3/4	2 1/2	USE-75-250	545	950	1240	3/16
		2 3/4	USE-75-275	460	805	1030	5/32
		1 3/4	USE-87-175	1370	2040	2675	5/16
		2	USE-87-200	1155	1825	2395	9/32
1	2	2 1/4	USE-87-225	1050	1745	2310	1/4
		2 1/2	USE-87-250	990	1630	2220	7/32
		2 3/4	USE-87-275	835	1480	1830	3/16
		1 3/4	USE-100-175	1840	2825	3775	5/16
1	2	2	USE-100-200	1430	2305	2965	9/32
		2 1/4	USE-100-225	1115	1930	2525	9/32
		2 1/2	USE-100-250	1055	1840	2460	1/4
		2 3/4	USE-100-275	1030	1740	2330	7/32

t=1/4"

# USM



I.D.	O.D.	L	Catalog #	Pressure at Deflection of			Max Bulge
				3	6.5	9.5	
06	19	45	USM-06-45	1190	1835	—	3.4
		53	USM-06-53	920	1490	2420	3.2
		71	USM-06-71	780	1250	1905	2.8
08	21	45	USM-08-45	1535	2340	—	3.4
		53	USM-08-53	1385	2180	2870	3.0
		71	USM-08-71	965	1510	2505	2.6
10	23	45	USM-10-45	1675	2555	—	4.0
		53	USM-10-53	1490	2360	2995	3.2
		56	USM-10-56	1430	2245	2880	2.8
		71	USM-10-71	1155	1990	2450	2.5
13	26	45	USM-13-45	1980	3075	—	4.5
		53	USM-13-53	1745	2760	3430	3.7
		56	USM-13-56	1590	2565	3110	3.3
		71	USM-13-71	1300	2120	2730	2.7
16	30	45	USM-16-45	2335	3680	—	5.5
		53	USM-16-53	2305	3620	4635	4.5
		56	USM-16-56	2300	3550	4510	3.8
		71	USM-16-71	1620	2760	3825	3.1
20	38	45	USM-20-45	4090	6395	—	6.7
		53	USM-20-53	3910	6360	8085	5.5
		71	USM-20-71	2845	4530	5820	3.8
25	50	45	USM-25-45	5840	9320	—	8.0
		53	USM-25-53	5480	9070	11520	6.7
		71	USM-25-71	4480	7640	9760	5.0

t=6.3mm

## How to Order:

Qty. Catalog No.

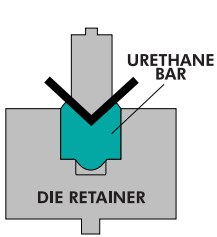
12 UHM-16-63

12 748595

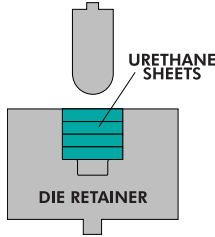
6 USS-31-150

10 UHS-16-43

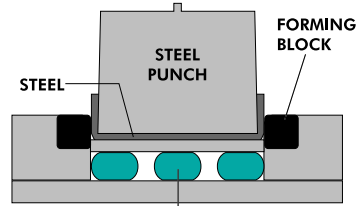
# Sheets, Rods & Bars



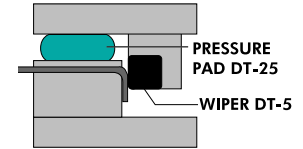
Square or rectangular shaped bars are used as bottom dies for scratch-free bending.



Sheets layered in a retainer offer multiple working surfaces and more penetration for radius bends.



Used as pressure pads, they exert enormous amounts of pressures. When used as pressure pads, they can replace rows of springs or banks of nitrogen cylinders.



## UCS Cast Sheet Stock

W x L	Thickness														
	1/16"	1/8"	3/16"	1/4"	3/8"	1/2"	5/8"	3/4"	1"	1 1/4"	1 1/2"	2"	2 1/2"	3"	
1" x 48"	A1	B1	C1	D1	E1	F1	G1	H1	I1	J1	K1	L1	M1	N1	
2" x 48"	A2	B2	C2	D2	E2	F2	G2	H2	I2	J2	K2	L2	M2	N2	
3" x 48"	A3	B3	C3	D3	E3	F3	G3	H3	I3	J3	K3	L3	M3	N3	
4" x 48"	A4	B4	C4	D4	E4	F4	G4	H4	I4	J4	K4	L4	M4	N4	
6" x 6"	A5	B5	C5	D5	E5	F5	G5	H5	I5	J5	K5	L5	M5	N5	
6" x 12"	A6	B6	C6	D6	E6	F6	G6	H6	I6	J6	K6	L6	M6	N6	
6" x 24"	A8	B8	C8	D8	E8	F8	G8	H8	I8	J8	K8	L8	M8	N8	
6" x 48"	A10	B10	C10	D10	E10	F10	G10	H10	I10	J10	K10	L10	M10	N10	
12" x 12"	A11	B11	C11	D11	E11	F11	G11	H11	I11	J11	K11	L11	M11	N11	
12" x 24"	A13	B13	C13	D13	E13	F13	G13	H13	I13	J13	K13	L13	M13	N13	
12" x 36"	A14	B14	C14	D14	E14	F14	G14	H14	I14	J14	K14	L14	M14	N14	
12" x 48"	A15	B15	C15	D15	E15	F15	G15	H15	I15	J15	K15	L15	M15	N15	
18" x 24"	A17	B17	C17	D17	E17	F17	G17	H17	I17	J17	K17	L17	M17	N17	
18" x 36"	A18	B18	C18	D18	E18	F18	G18	H18	I18	J18	K18	L18	M18	N18	
18" x 48"	A19	B19	C19	D19	E19	F19	G19	H19	I19	J19	K19	L19	M19	N19	
24" x 24"	A20	B20	C20	D20	E20	F20	G20	H20	I20	J20	K20	L20	M20	N20	
24" x 36"	A21	B21	C21	D21	E21	F21	G21	H21	I21	J21	K21	L21	M21	N21	
24" x 48"	A22	B22	C22	D22	E22	F22	G22	H22	I22	J22	K22	L22	M22	N22	

### How to Order:

Qty.	Type	Code	Grade
12	UCS	A1	DT05
6	UBR	Y3	DT25
12	URD	S2	DT15

Grade	Deflection	Hardness	Color
DT05	5%	75D duro	Black
DT15	15%	95A duro	Amber
DT25	25%	90A duro	Red
DT35	35%	80A duro	Green
DT40	40%	60A duro	Yellow

## UBR Bars

Size W x H	Lengths				
	6"	12"	24"	36"	48"
1/2" x 1/2"	V1	W1	X1	---	---
3/4" x 3/4"	V2	W2	X2	---	---
1" x 1"	V3	W3	X3	Y3	Z3
1 1/4" x 1 1/4"	V4	W4	X4	Y4	Z4
1 1/2" x 1 1/2"	V5	W5	X5	Y5	Z5
2" x 2"	V6	W6	X6	Y6	Z6
3" x 2"	V7	W7	X7	Y7	Z7
3" x 3"	V8	W8	X8	Y8	Z8
4" x 4"	V9	W9	X9	Y9	Z9

## Pressure Ratings for Bars

Size W x H	Length	Pressure (lbs.) per 1/8" Deflection		
		DT-35 (80A)	DT-25 (90A)	DT-15 (95A)
1" x 1"	12"	4,000	6,700	9,800
	24"	8,100	13,750	19,950
	36"	12,500	21,000	30,200
	48"	16,400	27,800	40,600
2" x 2"	12"	3,700	6,400	9,300
	24"	7,800	13,350	19,350
	36"	12,000	21,400	29,700
	48"	16,200	27,600	40,000
2" x 3"	12"	7,700	12,700	18,500
	24"	17,200	28,000	41,500
	36"	27,200	43,900	65,800
	48"	36,500	60,000	90,000
3" x 2"	12"	2,000	3,500	5,400
	24"	4,200	7,000	11,000
	36"	6,300	10,600	16,600
	48"	8,400	14,300	22,100

## URD Rods

Dia.	Lengths				
	6"	12"	24"	36"	48"
1/4"	Q1	R1	S1	T1	U1
3/8"	Q2	R2	S2	T2	U2
1/2"	Q3	R3	S3	T3	U3
5/8"	Q4	R4	S4	T4	U4
3/4"	Q5	R5	S5	T5	U5
7/8"	Q6	R6	S6	T6	U6
1"	Q7	R7	S7	T7	U7
1 1/8"	Q8	R8	S8	T8	U8
1 1/4"	Q9	R9	S9	T9	U9
1 3/8"	Q10	R10	S10	T10	U10
1 1/2"	Q11	R11	S11	T11	U11
1 5/8"	Q12	R12	S12	T12	U12
1 3/4"	Q13	R13	S13	T13	U13
2"	Q14	R14	S14	T14	U14
2 1/4"	Q15	R15	S15	T15	U15
2 1/2"	Q16	R16	S16	T16	U16
3"	Q17	R17	S17	T17	U17
3 1/2"	Q18	R18	S18	T18	U18
4"	Q19	R19	S19	T19	U19
5"	Q20	R20	S20	T20	U20
6"	Q21	R21	S21	T21	U21

## Pressure Ratings for DT-25(90A) Solid Rods

Cylinder Size Diameter x Height	Load for Deflection by:		
	1/8"	1/4"	3/8"
1/2" x 1"	120	220	--
5/8" x 1 1/4"	170	295	460
3/4" x 1 1/2"	215	365	520
7/8" x 1 3/4"	250	430	610
1" x 2"	295	595	700
1 1/8" x 2 1/4"	360	590	810
1 1/4" x 2 1/2"	390	670	920
1 1/2" x 3"	520	820	1150
2" x 3"	920	1460	2000
3" x 3"	2060	3300	3650
4" x 3"	3700	5800	7100

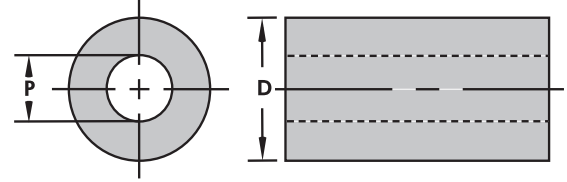


# Springs/Tubes

Advantages of urethane springs, open end strippers and tubes:

- High pressures
- Closer center distances
- High tear resistance
- Oil resistant
- Punch vibration dampening
- Easy installation and replacement - No need for set screws or stripper bolts
- No shrapnellizing (flying to pieces, when fractured under load) thus preventing injury to worker and damage to the die.
- Conventional heavy duty die springs obtain up to 500 lbs. per 1/8" deflection, compared to 2600 lbs. per 1/8" deflection on urethane springs.

The I.D. of the tube spring (P) is slightly smaller than the nominal punch body diameter, so as to enable the spring to be pressed on the punch body.



## How to Order:

Qty.	Catalog No.
12	UPL-18-100
12	UPM-100-1200

## UPL Light Duty

Catalog #	P		L	Lbs. Req. to Deflect		
	I.D.	O.D.		Length	1/8	1/4
UPL-18-100	3/16	11/16	1	250	470	680
UPL-18-125			1 1/4	195	365	525
UPL-18-150			1 1/2	170	315	450
UPL-18-1200			12 1/2	--	--	--
UPL-25-100	1/4	3/4	1	295	555	785
UPL-25-125			1 1/4	225	425	605
UPL-25-150			1 1/2	195	365	520
UPL-25-175			1 3/4	165	315	445
UPL-25-1200			12 1/2	--	--	--
UPL-31-100	5/16	13/16	1	325	615	875
UPL-31-125			1 1/4	255	485	690
UPL-31-150			1 1/2	220	415	595
UPL-31-175			1 3/4	185	355	500
UPL-31-200			2	160	300	425
UPL-31-1200			12 1/2	--	--	--
UPL-38-100	3/8	7/8	1	400	755	1080
UPL-38-125			1 1/4	310	590	845
UPL-38-150			1 1/2	250	475	675
UPL-38-175			1 3/4	200	385	545
UPL-38-200			2	180	340	480
UPL-38-2400			24 1/2	--	--	--
UPL-50-100	1/2	1	1	460	875	1240
UPL-50-125			1 1/4	305	580	825
UPL-50-150			1 1/2	295	555	790
UPL-50-175			1 3/4	250	470	670
UPL-50-200			2	225	425	605
UPL-50-2400			24 1/2	--	--	--
UPL-62-100	5/8	1 1/8	1	505	970	1365
UPL-62-125			1 1/4	400	770	1080
UPL-62-150			1 1/2	340	640	910
UPL-62-175			1 3/4	300	555	805
UPL-62-200			2	265	505	715
UPL-62-2400			24 1/2	--	--	--
UPL-75-125	3/4	1 3/8	1 1/4	675	1280	1815
UPL-75-150			1 1/2	580	1100	1560
UPL-75-175			1 3/4	500	950	1345
UPL-75-200			2	430	820	1160
UPL-75-225			2 1/4	375	710	1010
UPL-75-2400			24 1/2	--	--	--
UPL-88-125	7/8	1 5/8	1 1/4	950	1810	2565
UPL-88-150			1 1/2	820	1555	2205
UPL-88-175			1 3/4	705	1340	1905
UPL-88-200			2	610	1160	1645
UPL-88-225			2 1/4	530	1005	1430
UPL-88-250			2 1/2	450	850	1210
UPL-88-275			2 3/4	415	785	1115
UPL-88-2400			24 1/2	--	--	--
UPL-100-125	1	1 3/4	1 1/4	1025	1940	2760
UPL-100-150			1 1/2	845	1605	2280
UPL-100-175			1 3/4	710	1345	1915
UPL-100-200			2	620	1175	1670
UPL-100-225			2 1/4	555	1050	1495
UPL-100-250			2 1/2	495	935	1330
UPL-100-275			2 3/4	455	860	1225
UPL-100-2400			24 1/2	--	--	--

## UPM Medium Duty

Catalog #	P		L	Lbs. Req. to Deflect		
	I.D.	O.D.		Length	1/8	1/4
UPM-18-100	3/16	13/16	1	470	695	960
UPM-18-125			1 1/4	270	510	720
UPM-18-150			1 1/2	230	440	630
UPM-18-1200			12 1/2	--	--	--
UPM-25-100	1/4	7/8	1	430	810	1150
UPM-25-125			1 1/4	315	595	845
UPM-25-150			1 1/2	270	515	730
UPM-25-175			1 3/4	245	470	665
UPM-25-1200			12 1/2	--	--	--
UPM-31-100	5/16	15/16	1	410	790	1120
UPM-31-125			1 1/4	350	660	940
UPM-31-150			1 1/2	310	580	820
UPM-31-175			1 3/4	260	490	700
UPM-31-200			2	220	425	605
UPM-31-1200			12 1/2	--	--	--
UPM-38-100	3/8	1	1	515	975	1390
UPM-38-125			1 1/4	430	810	1155
UPM-38-150			1 1/2	350	665	940
UPM-38-175			1 3/4	295	460	790
UPM-38-200			2	255	485	690
UPM-38-2400			24 1/2	--	--	--
UPM-50-100	1/2	1 1/8	1	610	1160	1650
UPM-50-125			1 1/4	470	895	1275
UPM-50-150			1 1/2	380	725	1030
UPM-50-175			1 3/4	315	600	850
UPM-50-200			2	290	545	775
UPM-50-2400			24 1/2	--	--	--
UPM-62-100	5/8	1 1/4	1	715	1355	1930
UPM-62-125			1 1/4	540	1025	1460
UPM-62-150			1 1/2	380	870	1235
UPM-62-175			1 3/4	315	720	1025
UPM-62-200			2	345	655	935
UPM-62-2400			24 1/2	--	--	--
UPM-75-125	3/4	1 1/2	1 1/4	880	1670	2370
UPM-75-150			1 1/2	730	1385	1965
UPM-75-175			1 3/4	620	1175	1670
UPM-75-200			2	530	1005	1435
UPM-75-225			2 1/4	475	900	1280
UPM-75-250			2 1/2	430	810	1155
UPM-75-275			2 3/4	375	715	1015
UPM-75-2400			24 1/2	--	--	--
UPM-88-125	7/8	1 3/4	1 1/4	1195	2265	3220
UPM-88-150			1 1/2	987	1870	2660
UPM-88-175			1 3/4	845	1600	2275
UPM-88-200			2	725	1370	1950
UPM-88-225			2 1/4	650	1230	1750
UPM-88-250			2 1/2	585	1105	1575
UPM-88-275			2 3/4	510	970	1380
UPM-88-300			3	390	740	1055
UPM-88-2400			24 1/2	--	--	--
UPM-100-125	1	2	1 1/4	1395	2650	3765
UPM-100-150			1 1/2	1080	2050	2915
UPM-100-175			1 3/4	875	1655	2350
UPM-100-200			2	770	1460	2075
UPM-100-225			2 1/4	695	1315	1870
UPM-100-250			2 1/2	630	1195	1700
UPM-100-275			2 3/4	570	1085	1540
UPM-100-300			3	510	970	1380
UPM-100-400			4	380	720	1027
UPM-100-2400			24 1/2	--	--	--

## UPH Heavy Duty

Catalog #	P		L	Lbs. Req. to Deflect		
	I.D.	O.D.		Length	1/8	1/4
UPH-18-100	3/16	15/16	1	550	1050	1480
UPH-18-125			1 1/4	420	805	1140
UPH-18-150			1 1/2	310	580	820
UPH-18-1200			12 1/2	--	--	--
UPH-25-100	1/4	1	1	640	1215	1725
UPH-25-125			1 1/4	490	935	1325
UPH-25-150			1 1/2	360	680	965
UPH-25-175			1 3/4	315	595	840
UPH-25-1200			12 1/2	--	--	--
UPH-31-100	5/16	1 1/16	1	580	1100	1570
UPH-31-125			1 1/4	430	830	1180
UPH-31-150			1 1/2	310	780	1110
UPH-31-175			1 3/4	360	680	970
UPH-31-200			2	290	550	780
UPH-31-1200			12 1/2	--	--	--
UPH-38-100	3/8	1 1/8	1	720	1360	1945
UPH-38-125			1 1/4	535	1010	1445
UPH-38-150			1 1/2	360	895	1265
UPH-38-175			1 3/4	405	770	1090
UPH-38-200			2	330	625	890
UPH-38-2400			24 1/2	--	--	--
UPH-50-100	1/2	1 1/4	1	780	1410	2110
UPH-50-125			1 1/4	610	1090	1650
UPH-50-150			1 1/2	495	885	1330
UPH-50-175			1 3/4	445	795	1195
UPH-50-200			2	405	730	1100
UPH-50-2400			24 1/2	--	--	--
UPH-62-100	5/8	1 3/8	1	880	1580	2365
UPH-62-125			1 1/4	700	1255	1880
UPH-62-150			1 1/2	575	1035	1555
UPH-62-175			1 3/4	490	885	1325
UPH-62-200			2	440	790	1190
UPH-62-2400			24 1/2	--	--	--
UPH-75-125	3/4	1 3/4	1 1/4	1260	2270	3400
UPH-75-150			1 1/2	1080	1945	2920
UPH-75-175			1 3/4	915	1645	2470
UPH-75-200			2	806	1450	2420
UPH-75-225			2 1/4	715	1285	1930
UPH-75-250			2 1/2	635	1140	1710
UPH-75-275			2 3/4	585	1055	1580
UPH-75-2400			24 1/2	--	--	--
UPH-88-125	7/8	2	1 1/4	1632	2935	4405
UPH-88-150			1 1/2	1400	2515	3785
UPH-88-175			1 3/4	1185	2130	3200
UPH-88-200			2	1045	1875	2815
UPH-88-225			2 1/4	925	1665	2505
UPH-88-250			2 1/2	825	1485	2225
UPH-88-275			2 3/4	760	1365	2055
UPH-88-300			3	695	1245	1875
UPH-88-2400			24 1/2	--	--	--
UPH-100-125	1	2 1/2	1 1/4	2335	4200	6310
UPH-100-150			1 1/2	1920	3455	5195
UPH-100-175			1 3/4	1615	2910	4370
UPH-100-200			2	1370	2480	3720
UPH-100-225			2 1/4	1185	2130	3195
UPH-100-250			2 1/2	1090	1960	2940
UPH-100-275			2 3/4	995	1800	2700
UPH-100-300			3	895	1610	2425
UPH-100-400			4	660	1185	1785
UPH-100-2400			24 1/2	--	--	--

---

DAYTON PROGRESS CORPORATION  
500 Progress Road  
P.O. Box 39  
Dayton, Ohio 45449-0039 USA  
Telephone: (937) 859-5111  
Fax: (937) 859-5353

Dayton Progress Canada, Ltd.  
861 Rowntree Dairy Road  
Woodbridge, Ontario L4L 5W3  
Telephone: (905) 264-2445  
Fax: (905) 264-1071

Dayton Progress Ltd.  
G1 Holly Farm Business Park  
Honiley, Kenilworth  
Warwickshire CV8 1NP UK  
Telephone: 44 1 926 484192  
Fax: 44 1 926 484172

Dayton Progress Corporation of Japan  
2-7-35 Hashimotodai  
Sagamihara-Shi, Kanagawa-Ken  
229-1132 Japan  
Telephone: 81 427 74 0821  
Fax: 81 427 73 4955

Dayton Progress GmbH  
Im Heidegraben 8  
Postfach 1165  
61401 Oberursel/Ts., Germany  
Telephone: 49 61 71 924201  
Fax: 49 61 71 924220

Dayton Progress S.A.  
105 Avenue de l'Épinette  
BP 128  
Zone Industrielle  
77107 Meaux Cedex  
France  
Telephone: 33 1 60 247301  
Fax: 33 1 60 247300



Global leader in quality metal  
fabrication and stamping tools

---